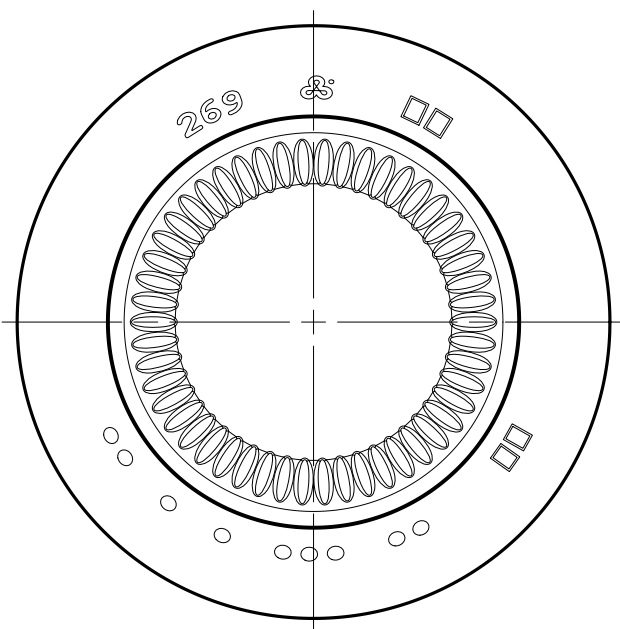


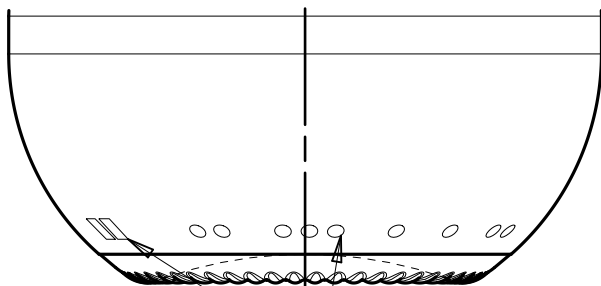
We declare our agreement with this drawing and the stated tolerances and hereby give our "Good for Execution".



Bottom view

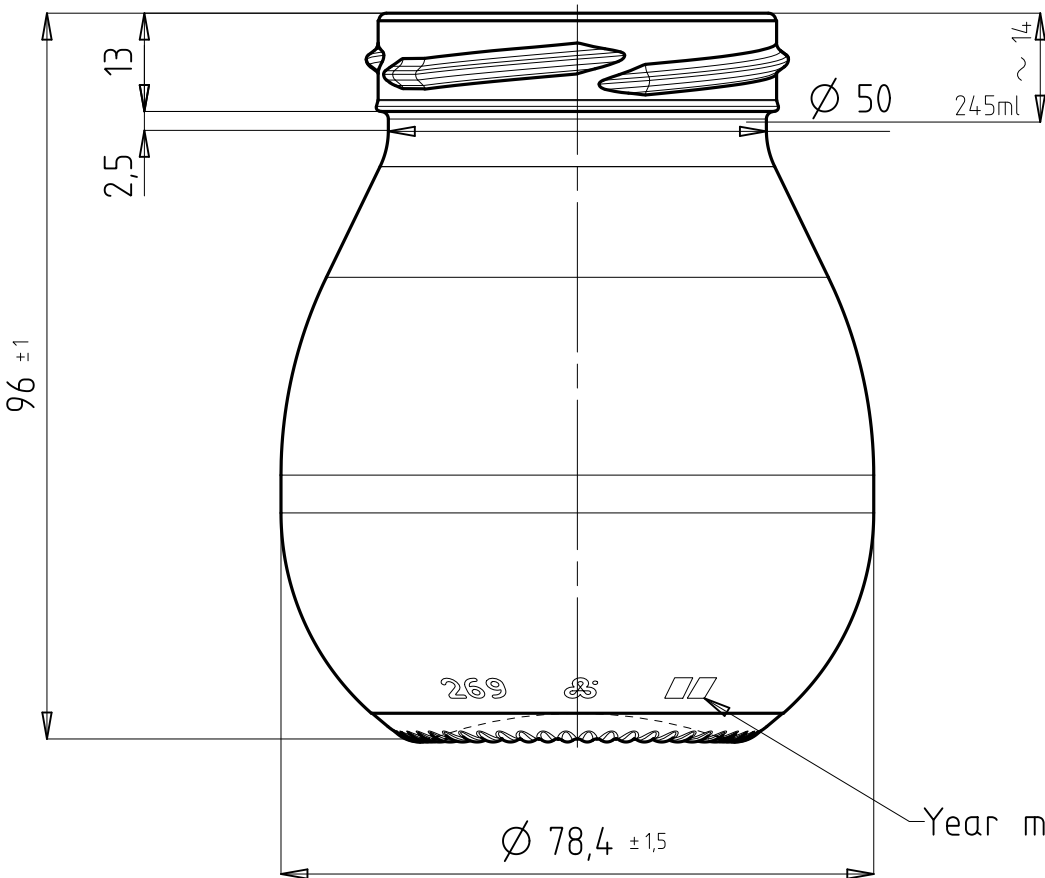


Back view



-Mould number + Dot code

Front view



Finish: Twist-Off 58mm
EN ISO 9100-6

INDEX	ZMENY / modifications	DAT	JMENO	SOUHLAS TECHNOLOGA PT approved		DAT 19.05.20	VIS Roz	TEPLOTA PLNENI Filling temperature		≤ 25 °C	NOMINAL OBJEM Capacity fillpoint		ml ± ml	POZNAMKA Remarks					
				SOUHVYRTYMU FIB approved	VYZAVOD KYJ	DAT 19.05.20	VIS Pre	TEPLOTA ZPRACOVANI Conditioning temperature		≤ °C	TOTAL OBJEM Capacity brimful		269 ml ± 9 ml	ZAKAZNIK Customer		Standard			
					VYZAVOD	DAT	VIS	OBSAH CO ₂ CO ₂ content		≤ g/l	HMOTNOST Approx. glass weight		~ 160 g	PODOBNY JAKO Similar to					
				FS SOUHLAS FS approved	VYZAVOD KYJ	DAT 20.05.20	VIS Kud	OBSAH ALKOHOLU Alcohol content		≤ Vol%	STREDNI TLOUSTKA STENY Average wall thickness		2,66 mm	NAHRADZUJE Replace No		5Y005.0245.6002_A			
				NETOLEROVANE ROZMERY DLE DIN 6129 dimensions without tolerances conform to standard DIN 6129				AXIALNI ZATIZENI Axial pressure				4,00 daN		PRUMER POD USTIM Neck connection dia.		50 mm	NABIDKA CISLO Offer No		
								POUZITI Disposal	MW	AW	EW	VNITRNI PRUMER KALIBRU Min. through bore		mm	MERITKO Scale		1:1		
								PROCES Process	BB	PB	EPB	BARVA Color		WE	KRESLIL Des	Pam	DAT 15.05.20	DATA TYP Filetyp	AZ
POZNAMKA Designation																			
MAYO 160g T058RH 269ml JS MAYO 160																			
VYROBEK CISLO Item No														INDEX					
5Y005.0269.6002														A					

Vetropack Moravia Glass a.s.
CZ-69701 Kyjov
Tel: 00420-518 603 111
www.vetropack.com

VNG-0701-01-F08-006-CZ/EN